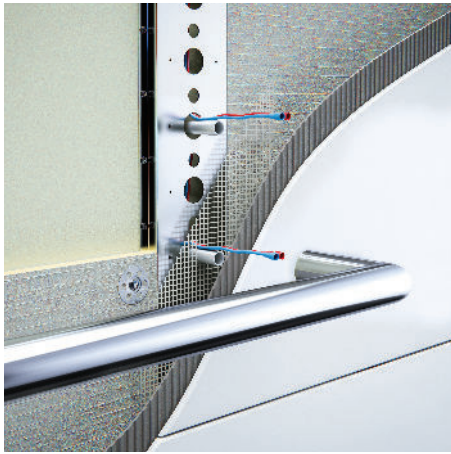
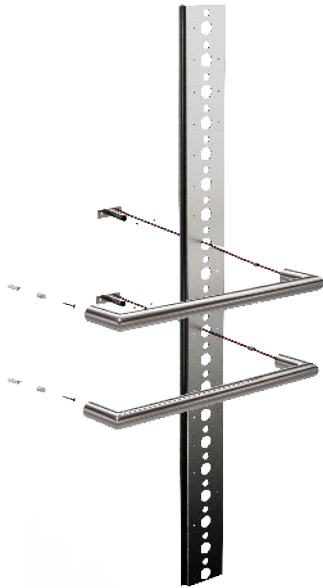


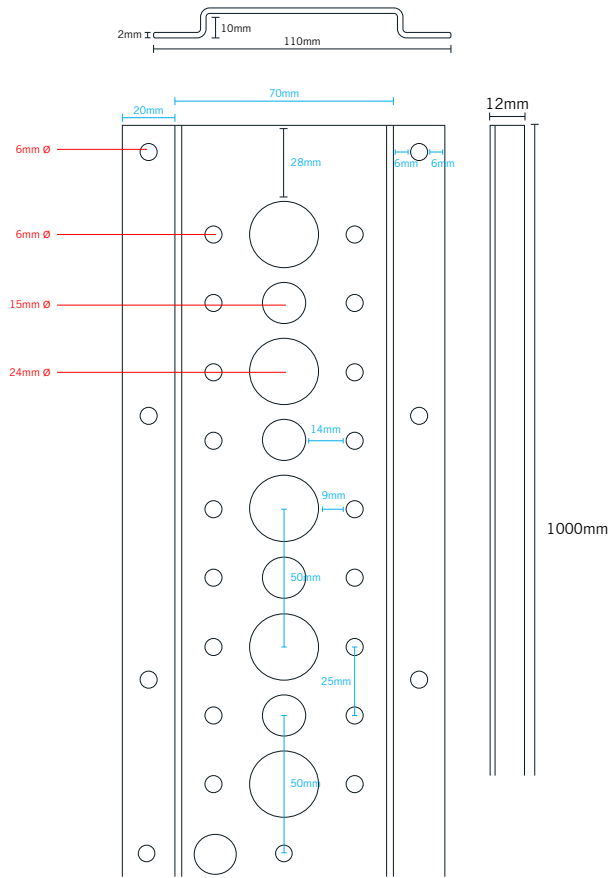
# 7060 Mounting System Instructions



**Image 1** - Electric connection cables can be run behind the mounting rail for simple connection. The wiring and spigot must come out the same large hole.



**Image 2** - All electrical connections can be made before tiling leaving the installer to simply connect the plugs and fix the rail to the spigot.



The 7060 mounting system is an in-wall mounting system designed for multiple rail installation of our Single Bar 12V Towel Rails. The mounting system can hold up to 10 rails at 100mm spacing, however recommended spacing is 200mm.

3 – 4 rails are required to sufficiently dry and warm a towel.

The 7060 mounting kit needs to be installed on the right-hand side of the rail. Mounting spigots are supplied with the single bar towel rails when purchased with a mounting kit. This system is not suitable for use with Vertical Rails, Ladder Rails, DCR7 or DCF7. It is also not suitable for surface mount. The mounting spigots need to be screwed onto the mounting system before the bar is installed and must be installed in the larger holes with the cables coming through the top of the same hole as the spigot. Refer to Image 1. Please note that for some models of single bar towel rails the spigot will need to be cut to the correct length. This will vary depending on the wall construction, thickness of the tile and the towel rail model.

Size: L1000 x W110 x D10mm

PLEASE ENSURE WHEN MAKING YOUR HOLES FOR THE SPIGOT AND WIRING THAT THESE WILL BE COVERED BY THE RAIL.

