

Ablaze Mirrors

Contractor Back-Lit Mirror Range

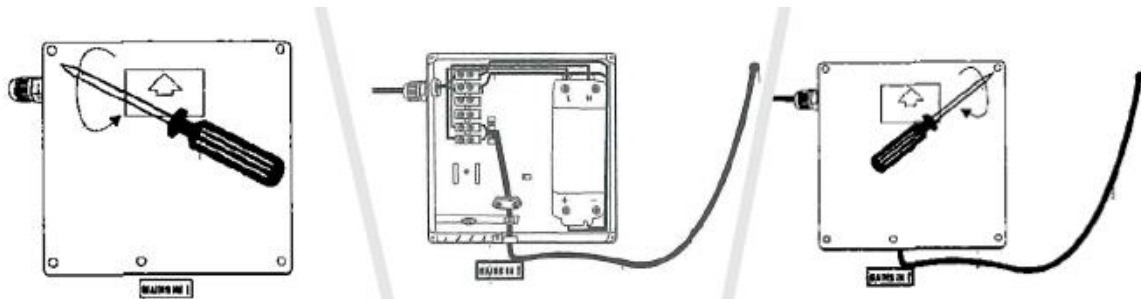
Installation Guide

- BSM97C & BSL97C Installation Steps 3
- BSM80C Installation Steps 4
- Technical Specifications 5
- Care Information 5
- Safety Information 6
- Warranty 7
- Contact Us 8

BSM97C & BSL97C Installation Steps

The BSM97C and BSL97C back-lit mirrors are supplied with a metal mounting bracket that is attached to the wall. There is a corresponding bracket on the back of the mirror that allows the mirror to be easily hung.

1. Screw the metal mounting brackets to the wall using suitable fixings for your wall type. Ensure the metal brackets are positioned so they line up with the hangers on the back of the mirror.
2. Ensure the mains power is switched off before attempting to carry out any electrical work. Open the cover at the back of the back-lit mirror and wire in the mains power. Replace the cover. See diagram below.

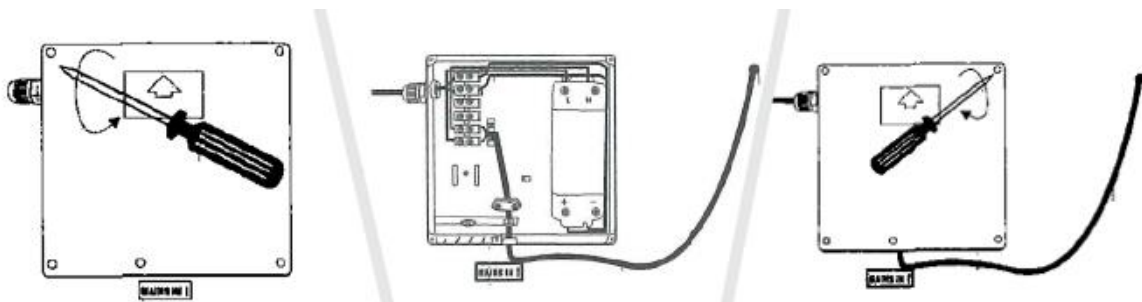


3. Locate the hangers on the back of the metal mounting brackets and gently lower the mirror until you can feel the brackets take the weight of the mirror.

BSM80C Installation Steps

The BSM80C back-lit mirror is supplied with wall plugs and screw in hooks, however these are not suitable for all wall types. If this fixing is not suitable for the wall type, alternate fixings will need to be obtained.

1. Drill two 6mm holes in the position of the metal wall hangers and insert the wall plugs provided. Insert and screw in the hooks with the hook end protruding the wall.
2. Ensure the mains power is switched off before attempting to carry out any electrical work. Open the cover at the back of the BSM80C back-lit mirror and wire in the mains power. Replace the cover.



3. Locate the '+' shaped opening over the protruding hook and gently lower the mirror until you can feel the screws take the weight of the mirror.

STOCK NO	SIZE (mm)	OUTPUT (W)
BSM97C	W900 x H750 x D45	14
BSL97C	W900 x H750 x D45	8
BSM80C	W800 x H800 x D25	11

Supply Voltage	240V
Wiring Method	Hardwired
Warranty	1 Year
Protection Rating	IP44
Lighting Type	Cool LED

Care Information

For best results clean mirror with methylated spirits and water at a rate of 30% methylated spirits and 70% water. Do not use Windex or similar cleaning products. Avoid getting water on the sides or back of the mirror as damage to the silver backing can occur. In coastal areas it is recommended to wipe around the edge of the mirror regularly to avoid salt build up that can cause silver creep.

Ablaze Contractor Back-lit Mirrors should be installed and tested by a qualified electrician and in accordance with current local regulations. Where possible the Ablaze Contractor Back-Lit Mirror should be screwed into studs or other suitable dry wall anchors, if fixing to hollow walls suitable anchors should be used.

Please read and understand this installation guide in before commencing installation. If you have any queries in regard to installation, please call 1300 368 631.

- Observe and adhere to electrical guidelines when placing your Ablaze Back-Lit Mirror in wet areas
- Ensure any timers or switches used are installed in correct zones according to the IP rating of the timer/switch.

Warranty Information

Thermogroup covers all its products with a satisfaction guarantee. In addition, Thermogroup will supply a replacement product where a fault is shown to be caused by manufacture, materials or workmanship providing the goods have been installed correctly and according to installation instructions. This guarantee does not include removal, freight or installation costs. Thermogroup's products come with guarantees that cannot be excluded under Australian Consumer Law and you are entitled to a replacement or refund for a major failure & compensation for any other reasonable foreseeable loss or damage. You are also entitled to have the goods repaired or replaced if the goods fail to be of acceptable quality and the failure does not amount to a major failure.

The Contractor Back-lit Mirror Range have a 1 year warranty. To use the warranty, repair or service the customer must provide purchase invoice/receipt.

If the product develops a fault within the warranty period due to normal wear and tear, Thermogroup at its discretion will recognise whether it's a faulty product or not. If it is impossible or not economical for the manufacturer to repair the product, the manufacturer will replace the faulty product with a new unit of the same model or if there is no stock available of the same model as the product, the manufacturer will replace the product with a new unit of a similar size. No responsibility can be taken for altered dimensions and lining up of existing holes.

The repair service offered within the warranty period only covers the faults and problems as developed from the manufacturer's errors. Any damage caused by improper use or carelessness or incorrect wiring is not covered.

Thermogroup is not responsible for any monetary loss or injuries caused by improper use of this product.

Contact Us

sales@thermogroup.com.au

www.thermogroup.com.au

1300 368 631

Thermogroup



That little bit extra...