





Thermotouch 9.2mG thermostat features a sleek white glass display and simple, manual underfloor heating controls


The 5215 and 5216 are manual thermostats that benefit from temperature control features that you would expect from a programmable thermostat, such as temperature limits and calibration

- 

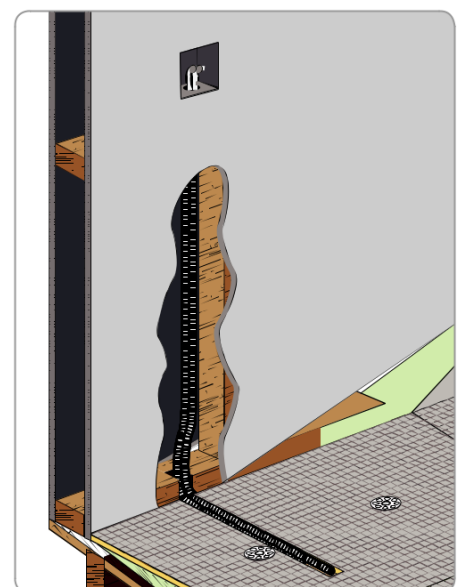
Specially designed for accurate, manual control of electric underfloor heating systems
- 

Benefit from simple on/off controls and easy, manual temperature adjustment
- 

Lock the screen to prevent tampering by holding the up and down arrows for 5 seconds
- 

Adjustable settings including temperature limits and temperature calibration to improve efficiency
- 

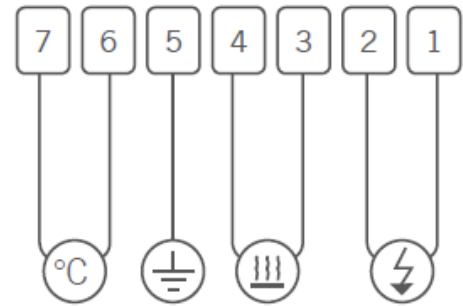
Built in ambient temperature sensor and external floor sensor for accurate temperature management



Floor temperature sensor should be installed in a conduit, within a clear area of the floor, and away from any other temperature influences.

Wiring diagram

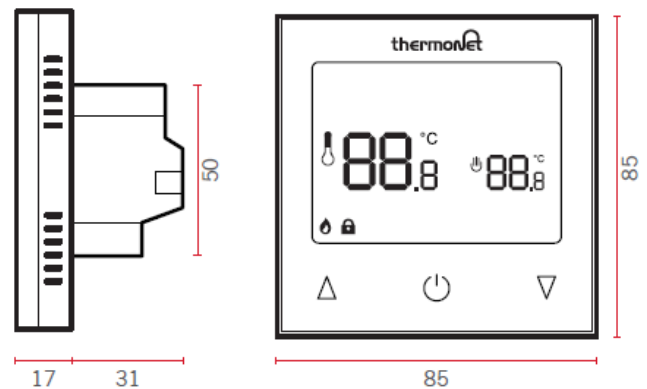
1. Live - 230V supply
2. Neutral - 230V supply
3. Neutral - Underfloor heating
4. Live - Underfloor heating
5. Earth
6. Floor sensor (not polarity sensitive)
7. Floor sensor (not polarity sensitive)



Box contents

- 1 x Thermotouch 9.2mG
- 1 x Installation guide
- 1 x 3m floor temperature sensor probe
- 1 x 2m sensor conduit
- 2 x Fixing screws

Dimensions (mm)



Technical data

Supply voltage	230V 50/60Hz
Maximum load	16A (3600W)
Backup storage	EEPROM (approx. 1 year backup)
Temperature range	5 ~ 80°C (0.5°C increments)
Accuracy	±0.5°C
Sensor rating	NTC 10kΩ @ 25°C
Consumption	2W
Warranty	3 years
IP rating	IP30
Width	85mm
Height	85mm
Depth	46mm (31mm in wall)