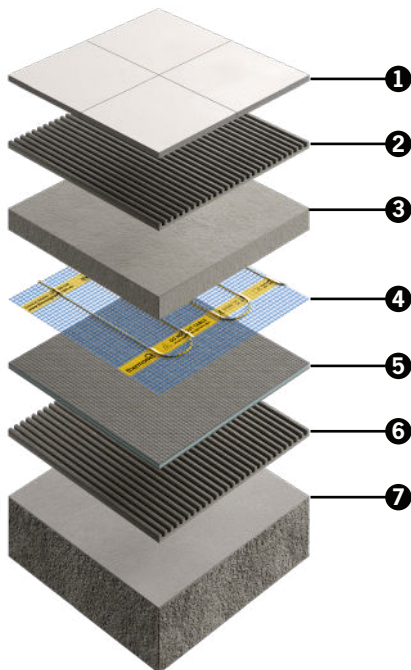


Thermonet Mesh 200W/m² TWF Kits

For Installation Under Tile and In Screed Up To 50mm Thick



- ① Tiled floor finish
- ② Flexible tile adhesive
- ③ Sand & cement screed
- ④ Thermonet 200W/m² heating mat
- ⑤ Optional Econoboard insulation board
- ⑥ Flexible tile adhesive (if insulation installed)
- ⑦ Prepared concrete or timber substrate



Lifetime Warranty

We are so confident of the quality of our Thermonet, Underfloor Heating systems, made in the United Kingdom, that we give each system a warranty that lasts a Lifetime with 3 year warranty on our Thermostats.



In Screed heating

Suitable for installation in screeds of 20mm to 50mm, and is recommended to be fixed to insulation boards.



Ideal for areas with limited floor space

Thermonet 200Watt mats are ideal for rooms with limited floor space for the heating mat. The 200Watt ensures a high heat output across the floor warming the entire room.



Perfect for high heat loss applications

The high heat output of the 200Watt mats makes them perfect for rooms which are prone to high heat loss. This can be further reduced by adding a layer of insulation below the heating.



TwistedTwin cable on fully self adhesive mesh

The unique stress free cable construction creates a longer lasting heating cable with zero electromagnetic field (Zero EMF). The self adhesive mesh speeds up installation by holding Thermonet matting to the substrate for easy self levelling and tile fixing.



Kit Includes: Thermonet 200W/m² Mat, Thermotouch Wi-Fi Thermostat (5235W), Floor Temperature Sensor, Sensor Conduit, Fixing Tape, Cable Monitor (6025), Installation Guide & Warranty Form.

Technical Data

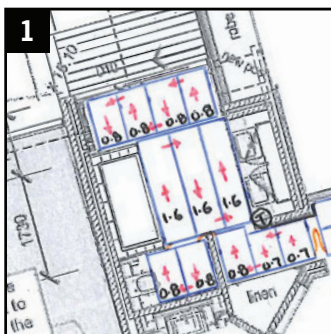
Width	500mm
Heated Width	430mm
Thickness	3.5mm*
Max. Temperature	28°C**
Protection Rating	IP68
Warranty	Lifetime on heating mat and 3 years on thermostat
Wattage	200W/m ²
Conductor Type	Single Ended
Cold Tail Length	5m

*Cold tail is 4mm thick

**Regulated by floor sensing thermostat

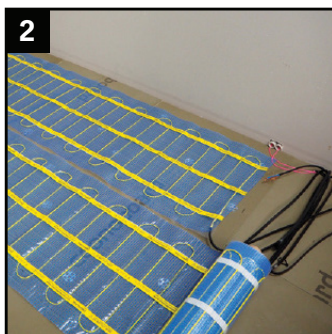
Installation Overview

Thermonet electric underfloor heating mat is quick and easy to install. This overview gives a guide to the basics. Always read the instructions in full before attempting your own installation.



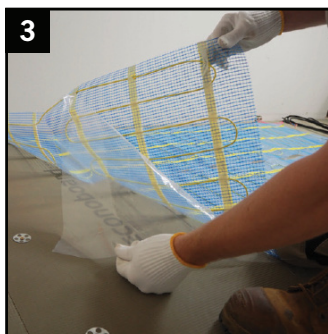
1 Plan out the installation

Determine the location of the Thermostat and floor sensor and work out the layout of the heating mat excluding areas under floor mounted fixtures.



2 Lay out the Thermonet mat

Starting at the Thermostat position, lay out the heating mat according to the plan.



3 Stick down the heating mat

Once the layout is finalised, peel off the clear plastic and stick down the heating mat.



4 Install floor finish

Cover the heating cables with self-levelling compound, sand and cement screed or tile directly on top using a full bed of tile adhesive.

Thermonet Mesh 200W/m² TWF Kits

Stock Code	Size (m)	Area (m ²)	Output (W)	Amps (A)	Resistance (Ω)
112002TWF	2 x 0.5	1.0	200	0.83	265
112003TWF	3 x 0.5	1.5	300	1.25	176
112004TWF	4 x 0.5	2.0	400	1.67	132
112005TWF	5 x 0.5	2.5	500	2.08	106
112006TWF	6 x 0.5	3.0	600	2.50	88
112007TWF	7 x 0.5	3.5	700	2.92	76
112008TWF	8 x 0.5	4.0	800	3.33	66
112009TWF	9 x 0.5	4.5	900	3.75	59
112010TWF	10 x 0.5	5.0	1000	4.17	53
112011TWF	11 x 0.5	5.5	1100	4.58	48
112012TWF	12 x 0.5	6.0	1200	5.00	44
112013TWF	13 x 0.5	6.5	1300	5.42	41
112014TWF	14 x 0.5	7.0	1400	5.83	38
112016TWF	16 x 0.5	8.0	1600	6.67	33
112018TWF	18 x 0.5	9.0	1800	7.50	29
112020TWF	20 x 0.5	10.0	2000	8.33	26
112024TWF	24 x 0.5	12.0	2400	10.00	22