

Thermorad In-Wall Heater

230-240V In-Wall Towel Heater

Installation Guide



Installation Information

Thank you for your purchase

Thank you for choosing a Thermogroup product.

This document will provide a step-by-step guide to a perfect installation as well as details on the warranty and how to get technical support should you need it.

To ensure a safe, hassle-free installation to be proud of, please take the time to read this guide in full before you start. We've taken the time to highlight the below key installation information as well as provide step-by-step installation images to make it easy for you to get the job done.

If you have any questions about your Thermorad Panel call our technical support team on 1300 989 464. We will do our best to find a solution and will always give that little bit extra...

Thanks again for choosing a Thermogroup product.

Key Installation Information



Your completed installation should look like the build-up shown opposite. Make sure the panel is mounted flush with the surface of the wall frame so there is no air gap between the panel and the back of the wall sheet.



Make note of the location of the panel and ensure all fixings are installed outside the panel area to ensure the fixings do not penetrate the panel.



Ensure the supply lead is prewired or run to an access point prior to the wall being sheeted.



All electrical work must be completed by a qualified electrician in accordance with any local regulations.



All modification to the framework and reinforcing of the framework to accommodate the panel is the responsibility of the installer.

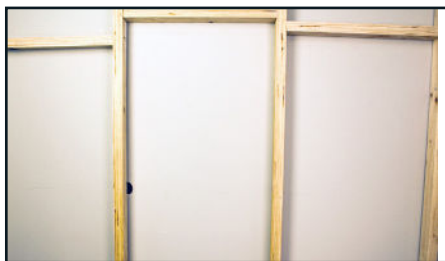
This appliance is not intended for use by persons (including children) with reduced physical, sensory or mental capabilities, or lack of experience and knowledge, unless they have been given supervision or instruction concerning use of the appliance by a person responsible for their safety.

Children should be supervised to ensure that they do not play with the appliance.

Means for full electrical disconnection must be incorporated in the fixed wiring installation in accordance with the wiring rules.

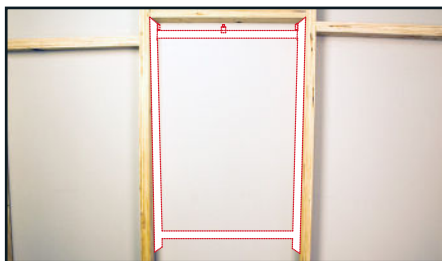
The supply cord into the appliance cannot be replaced. If the cord is damaged the appliance should be scrapped and replaced.

Installation Information



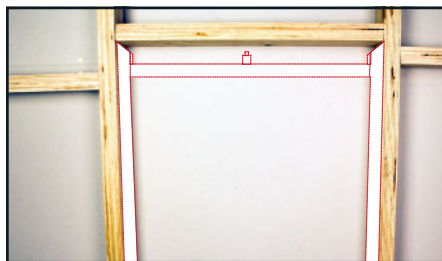
1. Plan out the installation

Your completed installation should look like the build-up shown opposite. Make sure the panel is mounted flush with the surface of the wall so there is no air gap between the panel and the back of the wall sheet.



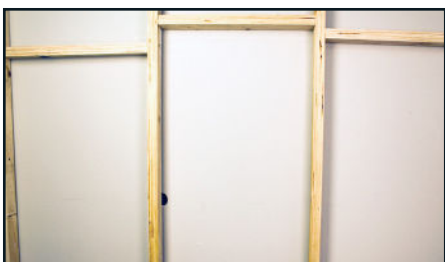
2. Modify the framework

Begin by ensuring the spacing between the studs is suitable for the size of the panel and modifying the framework if necessary. Refer to product details on back cover for required stud spacing depending on the model.



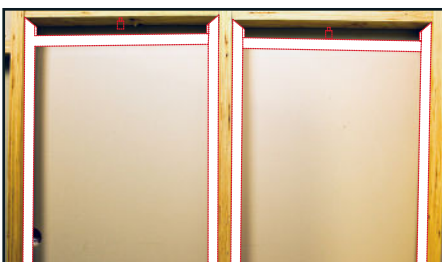
3. Fix studs above the Thermorad

It is recommended to include fixing in the wall above the Thermorad to provide a suitable mounting for your towel rail to fix to.



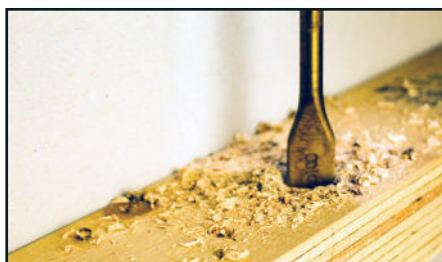
4. Reinforce the framework

Once your frame modifications have been completed you may need to reinforce the framework with additional timber if required.



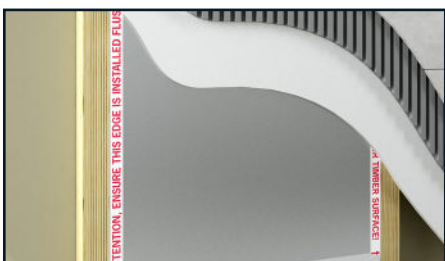
5. Dual setup for multiple or wide rails

When installing multiple rails side by side or rails over 650mm wide, we recommend the use of two Thermorad panels to increase the heating area. Having a stud running between the two Thermorad's provides an anchor point for the wall sheeting to be fixed to.



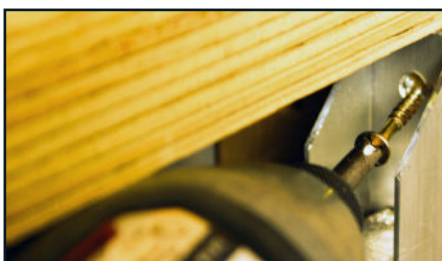
6. Make provision for the power lead

The power supply comes out of the top of the unit. Identify where the power lead will be running to connect to the power supply or timer and make appropriate provision for running the cable.



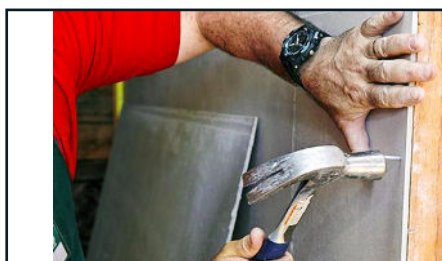
7. Place the Thermorad in position

Sit the Thermorad in the wall cavity ensuring that the aluminium face marked front is facing out. Ensure the panel is flush with the wall frame surface so there is no cavity created between the panel and the wall sheet when it is sheeted.



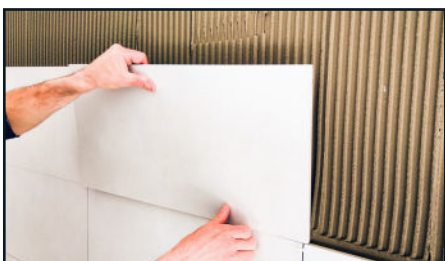
8. Fix the Thermorad in position

Fix the Thermorad in position by screwing through the fixing holes provided at the top and bottom of the unit. Ensure the face of the unit is flush with the front face of the stud.



9. Sheet the wall

Sheet the wall over the Thermorad panel. Make sure you mark the exact location of the panel and the studs onto your sheet so that you don't accidentally fix or screw into the panel and damage it.



10. Tile or Paint the wall

Tile or paint the wall to complete your bathroom.



11. Mount the rail

Mount the rail onto the wall ensuring you leave a minimum of 50mm space above the top of the Thermorad before fixing the rail so as not to mount into the panel.



12. Connect to the power supply

Connect the Thermorad panel lead into the incoming power supply or timer. This work must be undertaken by a qualified electrician and it is important to ensure any electrical connections are accessible.

Warranty Information

Thermogroup covers all its products with a satisfaction guarantee. In addition, Thermogroup will supply a replacement product where a fault is shown to be caused by manufacture, materials or workmanship providing the goods have been installed correctly and according to installation instructions. This guarantee does not include removal, freight or installation costs. Our goods come with guarantees that cannot be excluded under the Australian Consumer Law. You are entitled to a replacement or refund for a major failure and compensation for any other reasonably foreseeable loss or damage. You are also entitled to have the goods repaired or replaced if the goods fail to be of acceptable quality and the failure does not amount to a major failure.

The Thermorad In-wall Heater has a 10 year warranty. To use the warranty the customer must provide a proof of purchase.

If the product develops a fault within the warranty period due to normal wear and tear, Thermogroup at its discretion will recognise whether it's a faulty product or not. If it is impossible or not economical for the manufacturer to repair the product, the manufacturer will replace the faulty product with a new unit of the same model.

The repair service offered within the warranty period only covers the faults and problems as developed from the manufacturer's errors. Any damage caused by improper use, carelessness or incorrect wiring is not covered.

Thermogroup is not responsible for any monetary loss or injuries caused by improper use of this product.

Design is Patent Pending - 2022201917

Technical Specifications

CODE	PANEL SIZE WxHxD (mm)	HEATED SIZE (mm)	OUTPUT (W)	VOLTAGE (V)	WARRANTY	TO FIT STUD CENTRE OF (mm)
TR4011	405 x 1150 x 25	350 x 930	160	230-240	10 Years	450
TR5585	555 x 850 x 25	500 x 650	160	230-240	10 Years	600



Contact Us

Phone: 1300 368 631 | Technical Helpline: 1300 989 464
sales@thermogroup.com.au | www.thermogroup.com.au