

Colour Matching Reference Guide

Contents

Thermorail Finishes Overview	3
Thermorail Brushed Bronze Finish	4
Thermorail Brushed Nickel and Brushed Stainless	6
Thermorail Brushed Brass and Brushed Gold	10
Thermorail Gun Metal Finish	12
Thermorail Brushed Gun Metal Finish.....	14
Thermorail Matt White Finish.....	16
Thermorail Finish Matching Guide.....	17

Thermorail Finishes Overview



Traditionally tapware and bathroom accessories were predominately in a polished chrome finish. However, in more recent years there has been a significant increase in different colours and finishes available for bathroom and hardware accessories. However each tapware or accessory supplier/brand has specific colours and in some cases unique colour names which can make the choosing and matching of accessories quite overwhelming.

When comparing finishes between various brands you might wonder why there are differences in the colour even though the name is the same (such as Brushed Nickel), there are several reasons for this as listed below:

Process: There is three main processes for colouring metal being powder coating, electroplating and PVD (Physical Vapour Disposition) and each of these will produce a different colour/finish

Base Material: Even if two parts are put through the exactly same process together, if the base material is difference it will result in a different colour. Most taps are made from brass whereas most heated towel rails are made from stainless steel

Finish/Clear Coat: Most Electroplating and PVD finishes will have a clear protective coating applied which can also change the look of the overall finish depending on if the clear coat is a matt, satin or gloss coat

Batch: There are many external factors (such as climate) that can contribute to slight differences between batches even if the colour and process is kept consistent

Direction & Depth of Brushing: With a brushed finish, the depth and the direction of the brushing can make the finish look significantly different as it affects how the light caught and reflected

Thermorail Brushed Bronze Finish



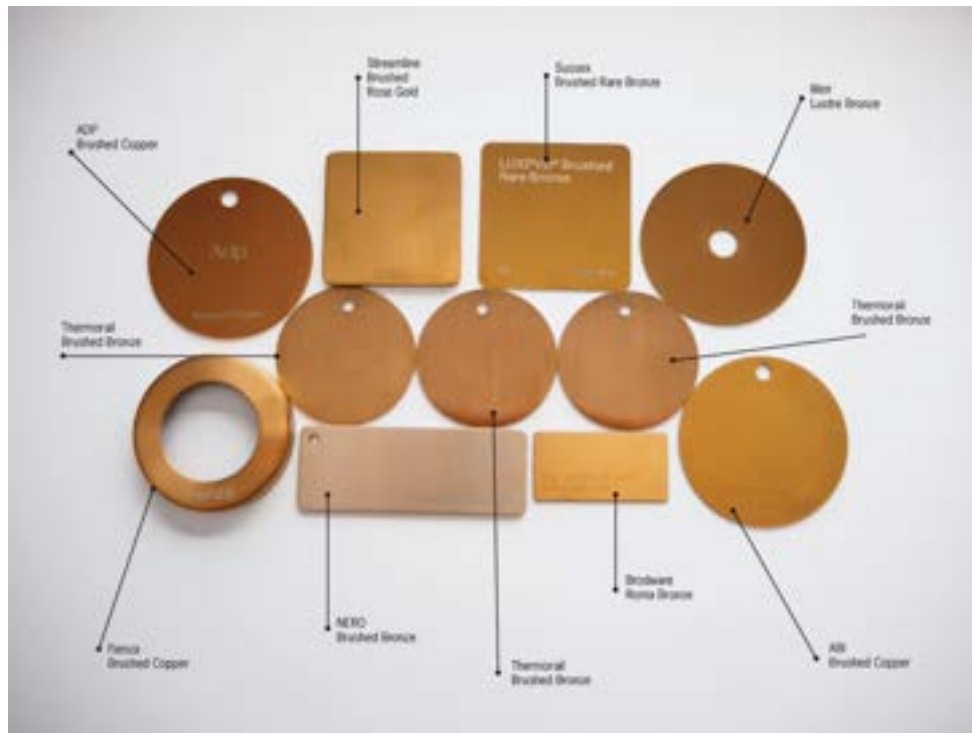
Introducing Brushed Bronze, the new finish coming to the forefront in the interior hardware market.

With its copper-rich alloy base, it shares a strikingly similar tone and colour to traditional copper finishes.

Brushed Bronze finish is a warm, earthy colour which ranges from a deep golden brown to maroon or purplish hues.

Numerous tapware brands now offer variations of brushed bronze or brushed copper finishes, and below, we'll delve into how these compare with the New Thermorail Brushed Bronze finish.

Thermorail Brushed Bronze Finish



Thermorail Brushed Bronze Compared to other Brushed Bronze Finishes

Nero Brushed Bronze: This finish is significantly lighter and also has a bit more of a purplish tinge compared to the Thermorail Brushed Bronze finish.

Meir Lustre Bronze: This finish is very similar in colour and tone although it is slightly more shiny than the Thermorail Brushed Bronze finish.

ADP Brushed Copper: This finish is a good match although it is a bit lighter than the Thermorail Brushed Bronze finish.

Sussex Brushed Rare Bronze: This finish has a slightly more brown tone and is a bit more shiny than the Thermorail Brushed Bronze finish.

Brodware Roma Bronze: This finish is slightly lighter and has a bit more of a brownish tinge to it compared to the Thermorail Brushed Bronze finish.

ABI Brushed Copper: This finish is lighter and more of a browner colour and is also quite a matt finish compared to the Thermorail Brushed Bronze finish.

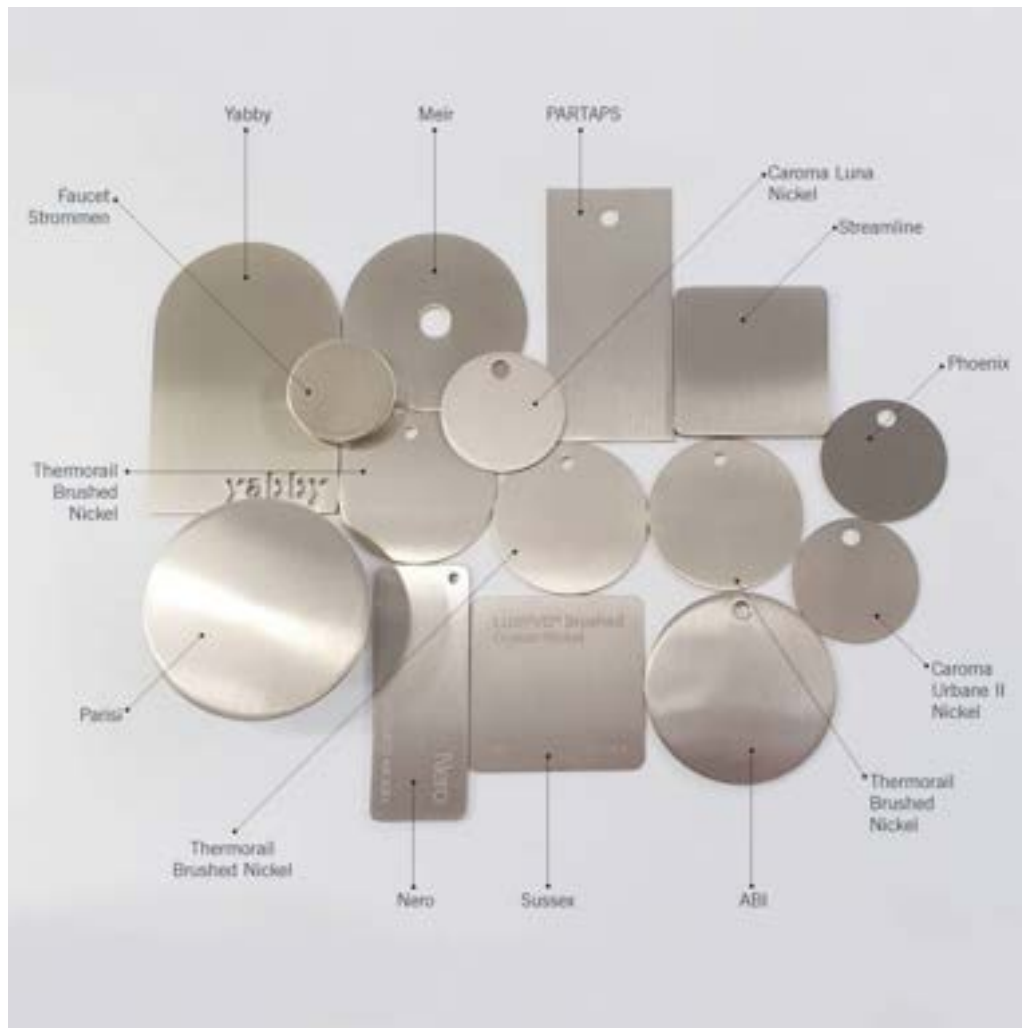
Streamline Brushed Rose Gold: This finish is a very similar tone although it is slightly lighter and more shiny than the Thermorail Brushed Bronze finish.

Fianza Brushed Copper: This finish is very similar in colour and tone although it is slightly lighter than the Thermorail Brushed Bronze finish.

In conclusion, the Thermorail Brushed Bronze finish would be best matched with Fianza Brushed Copper but will also work well with ADP Brushed Copper, Streamline Brushed Rose Gold and Meir Lustre Bronze.

Thermorail Brushed Nickel and Brushed Stainless

We have put together the below descriptions and images which will help to show how the Thermorail Brushed Nickel, Brushed Brass and Brushed Gold finishes match with other finishes on the market.



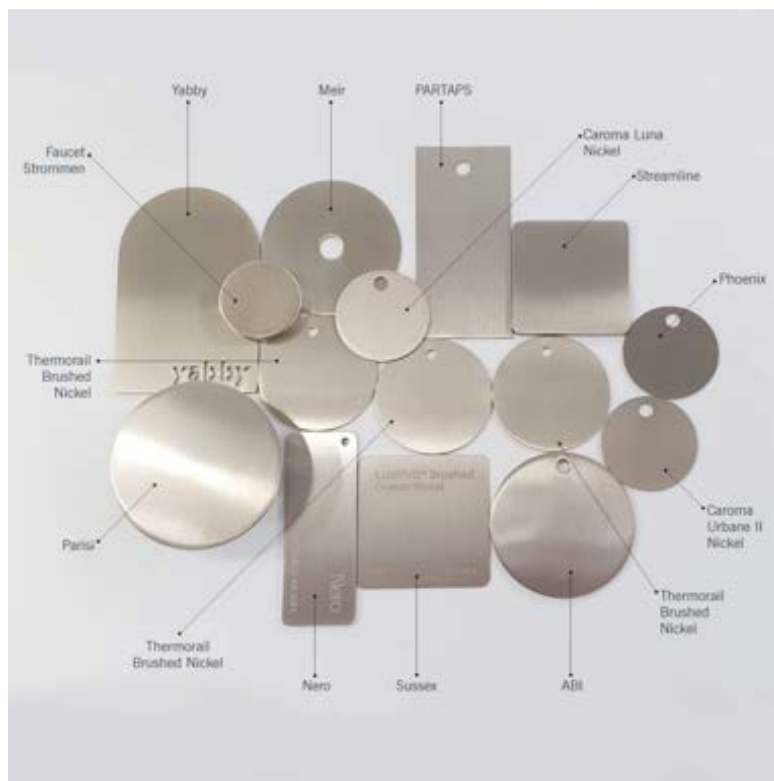
Brushed Nickel

Brushed/Satin finishes have been trending for the last few years and Brushed Nickel is at the forefront of this trend. Compared to a Chrome finish, Brushed Nickel is a matte finish where you often see the actual brush lines and also has a softer, warm, yellowish tone compared to the bright silver finish of Chrome.

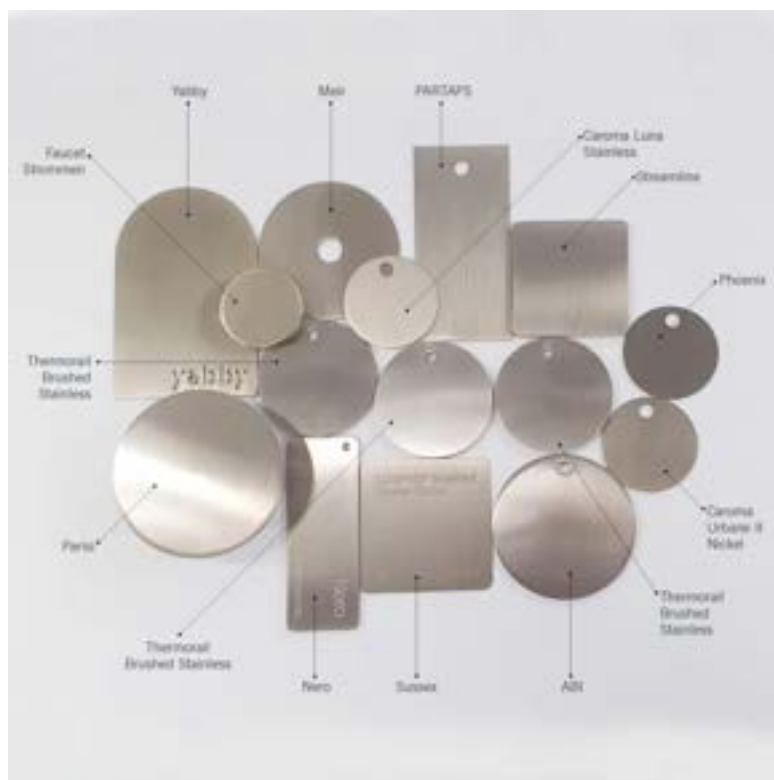
In our Thermorail range, we have both Brushed Stainless and Brushed Nickel finishes available. Brushed Stainless Steel is achieved by brushing the actual base material of the rail. Due to the fact that the base material is used rather than applying another finish/process, this is a very durable and cost-effective brushed finish. Brushed Stainless Steel however will generally be more of a hard, deep silver finish compared to the warm, soft finish of Brushed Nickel. Thermorail also offers a Brushed Nickel finish that has a softer yellowish tinge that matches closer than Brushed Stainless Steel to the Brushed Nickel tapware available.

Thermorail Brushed Nickel and Brushed Stainless

Thermorail Brushed Nickel compared with other Brushed Nickels

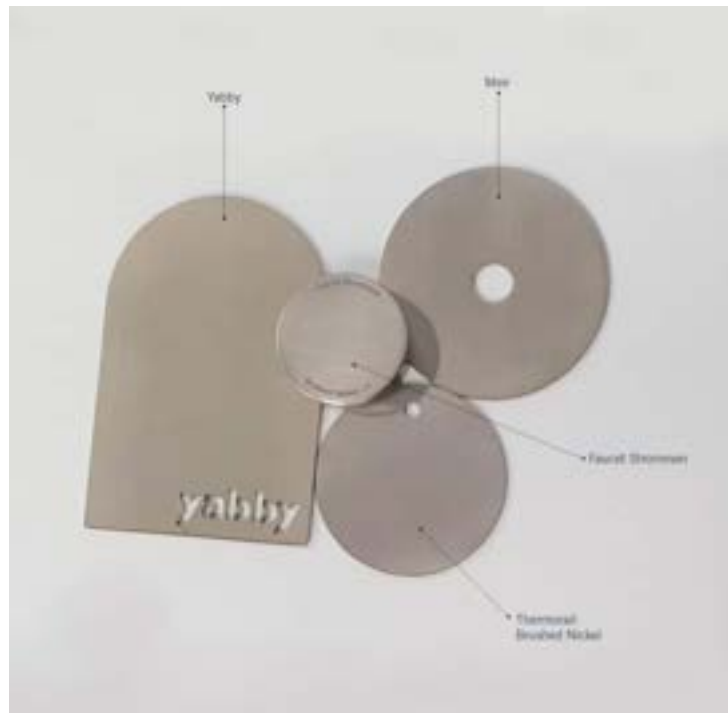


Thermorail Brushed Stainless Steel compared with other Brushed Nickels



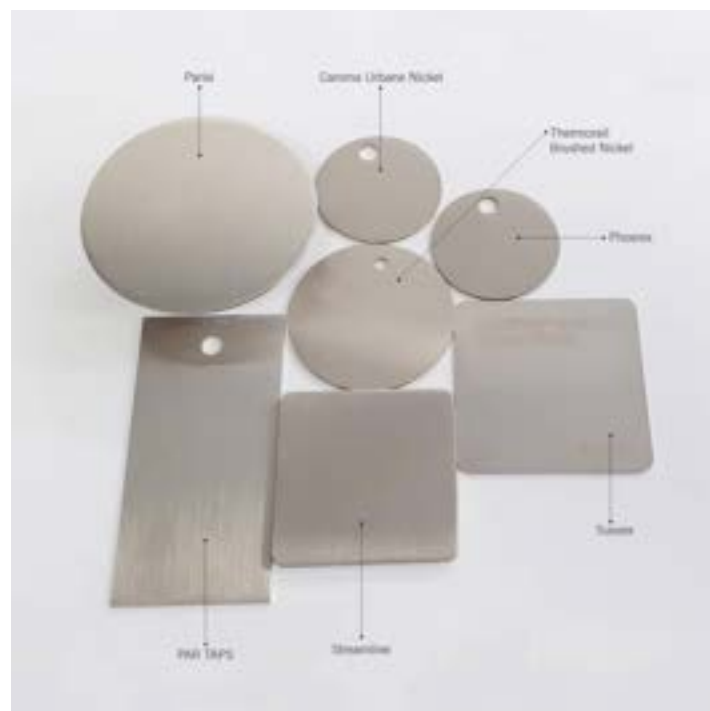
Thermorail Brushed Nickel and Brushed Stainless

Yabby, Faucet Strommen & Meir are some of the warmer, yellower Brushed Nickels on the market and should definitely be matched with our Brushed Nickel finish rather than Brushed Stainless Steel. The Yabby finish is called warm brushed and certainly has a very yellowish tinge so some might not be happy with the match to our Brushed Nickel.



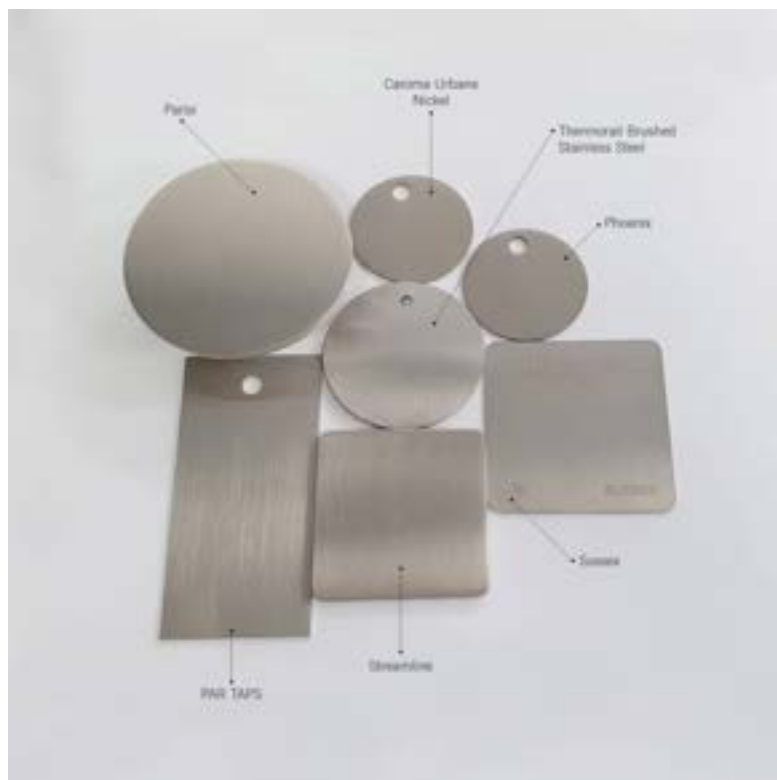
For Parisi, Sussex, Streamline, Par Taps, Phoenix and Caroma Urbane Nickel, these are a closer match to Thermorail Brushed Nickel however in our opinion would also work fine with our Brushed Stainless Steel when looking for a more cost-effective option.

Parisi, Sussex, Streamline, Par Taps, Phoenix and Caroma Urbane Nickel with Thermorail Brushed Nickel



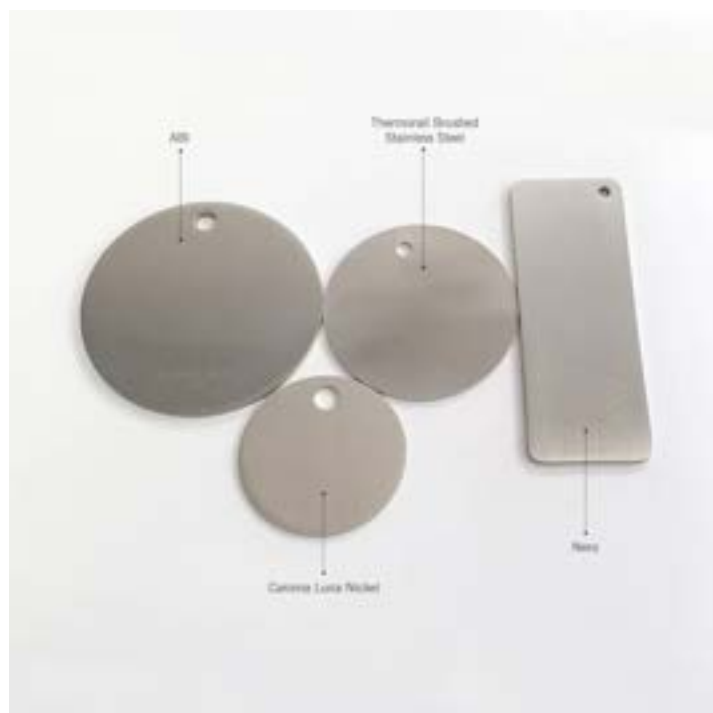
Thermorail Brushed Nickel and Brushed Stainless

Parisi, Sussex, Streamline, Par Taps, Phoenix and Caroma Urbane Nickel with Thermorail Brushed Stainless Steel



Nero, ABI and Caroma Luna Nickel tend to be on the cooler side of Brushed Nickel and actually match in better with Thermorail Brushed Stainless Steel finish than the Brushed Nickel range.

Nero, ABI and Caroma Luna Nickel with Thermorail Brushed Stainless Steel



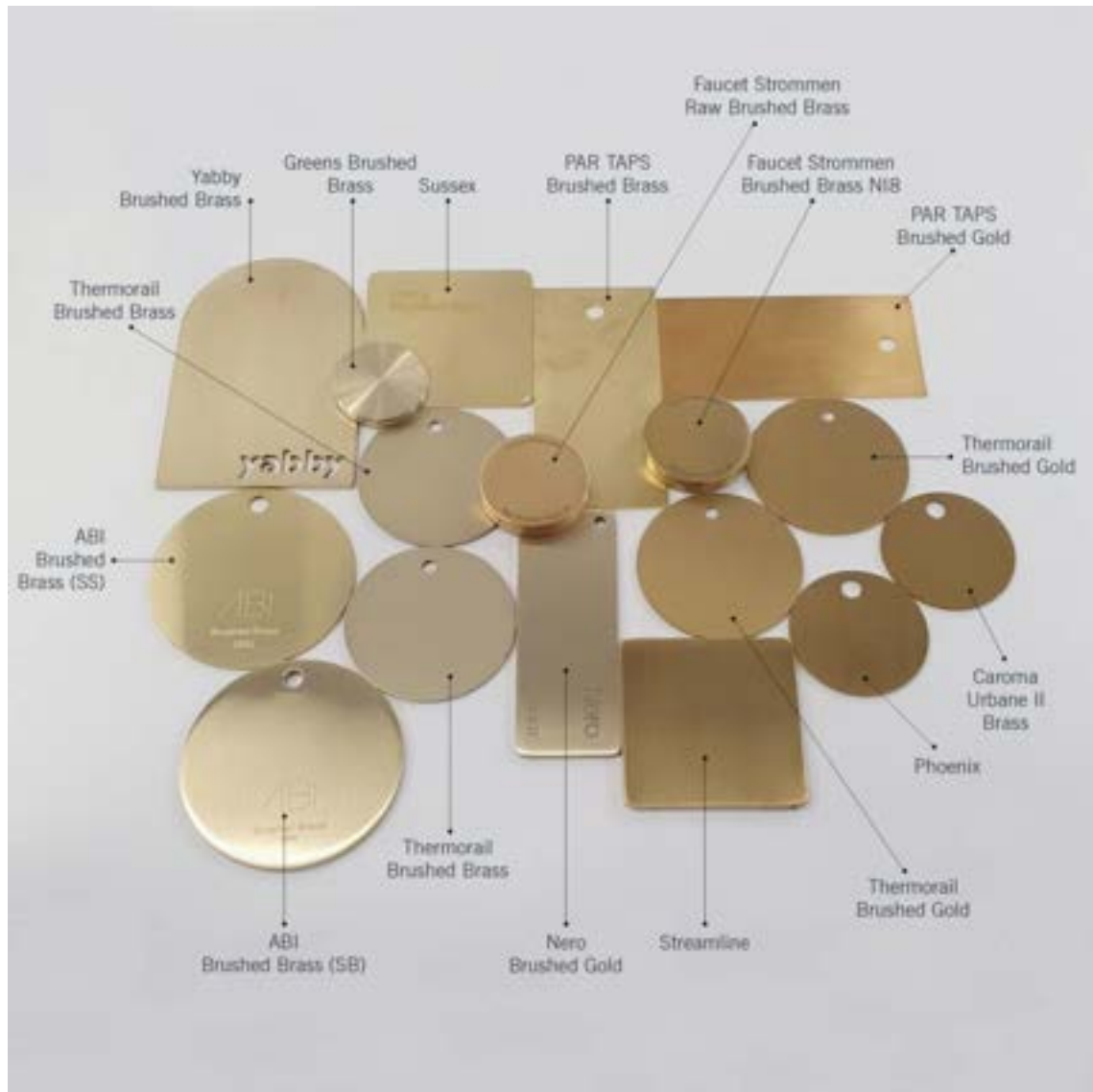
Thermorail Brushed Brass and Brushed Gold

Brushed Brass and Brushed Gold

Brass or Brass finishes have a warm, rich tone that will add a touch of elegance and luxury to your bathroom. Brushed Gold is generally a deeper, darker more muted colour. Brushed Brass however is a lighter, softer tone without the depth and darkness of Brushed Gold.

Both finishes provide warmth and are paired well with neutral, monochrome colour schemes. Thermorail has a range of Heated Towel Rails available in Brushed Gold and Brushed Brass finishes. Both finishes are achieved by PVD over stainless steel.

Thermorail Brushed Brass & Brushed Gold with various other tapware options

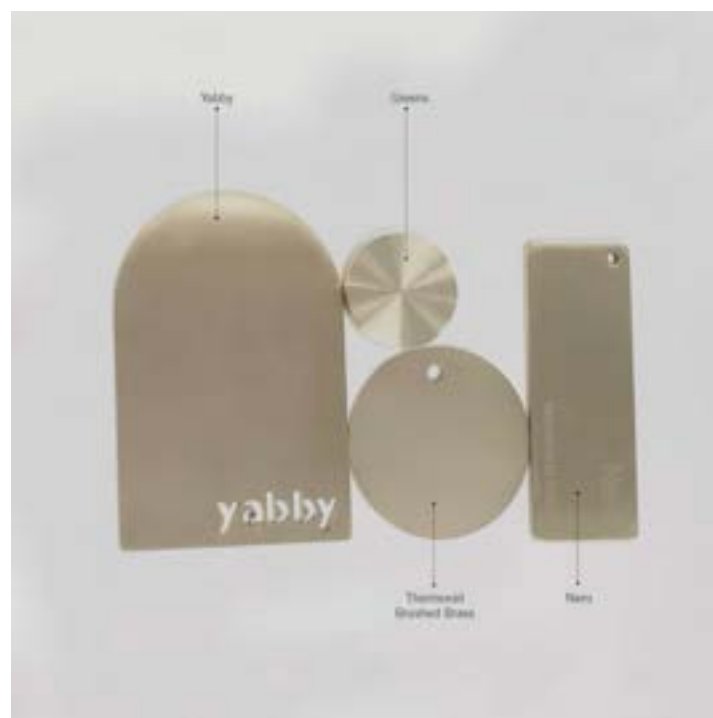


Thermorail Brushed Brass and Brushed Gold

Thermorail Brushed Gold matches well with Streamline Brushed Brass, Phoenix Brushed Gold and Caroma Urbane II Brass.



Thermorail Brushed Brass matches best with Yabby and Green Brushed Brass and Nero Brushed Gold

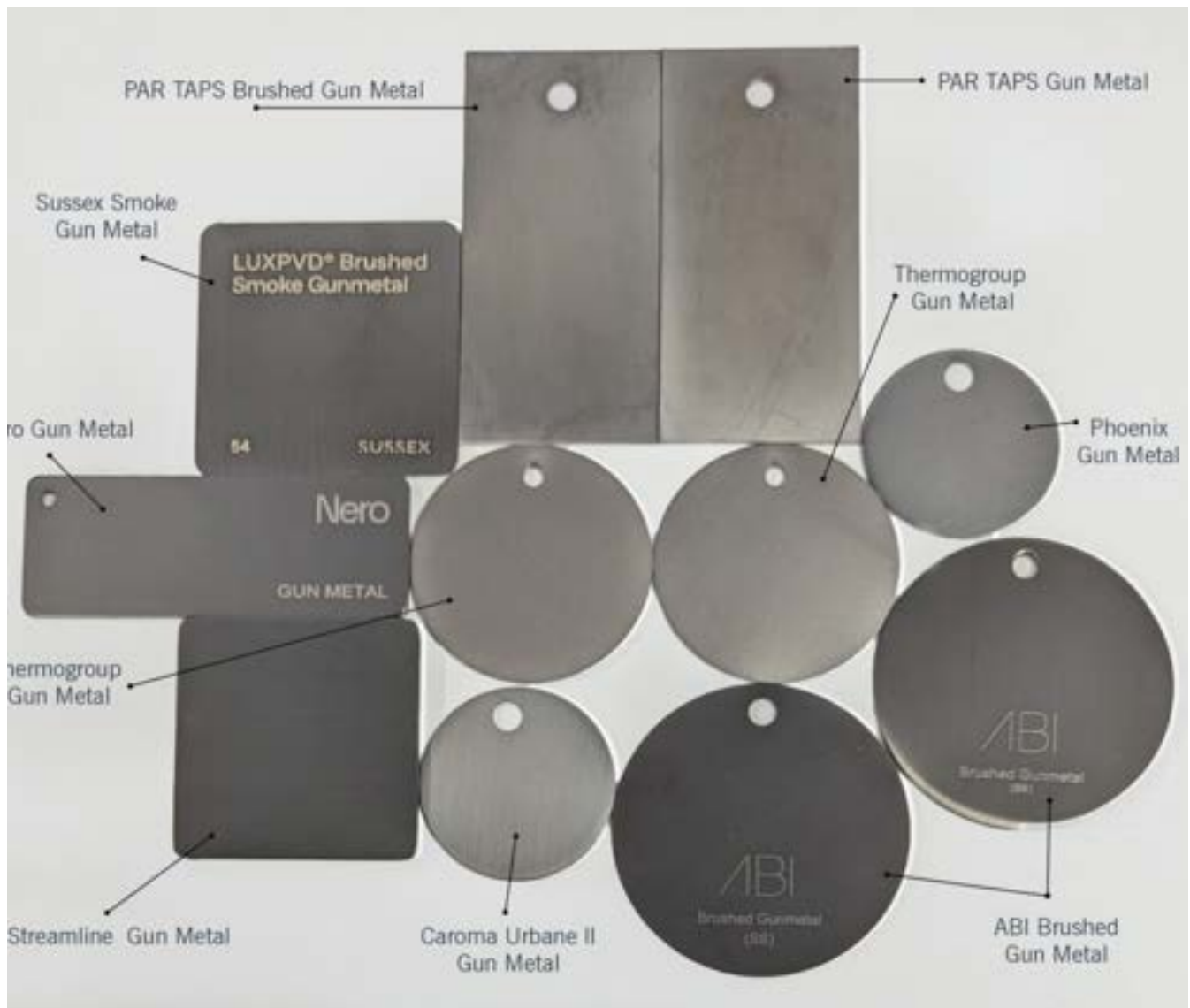


Thermorail Gun Metal Finish

Gun Metal

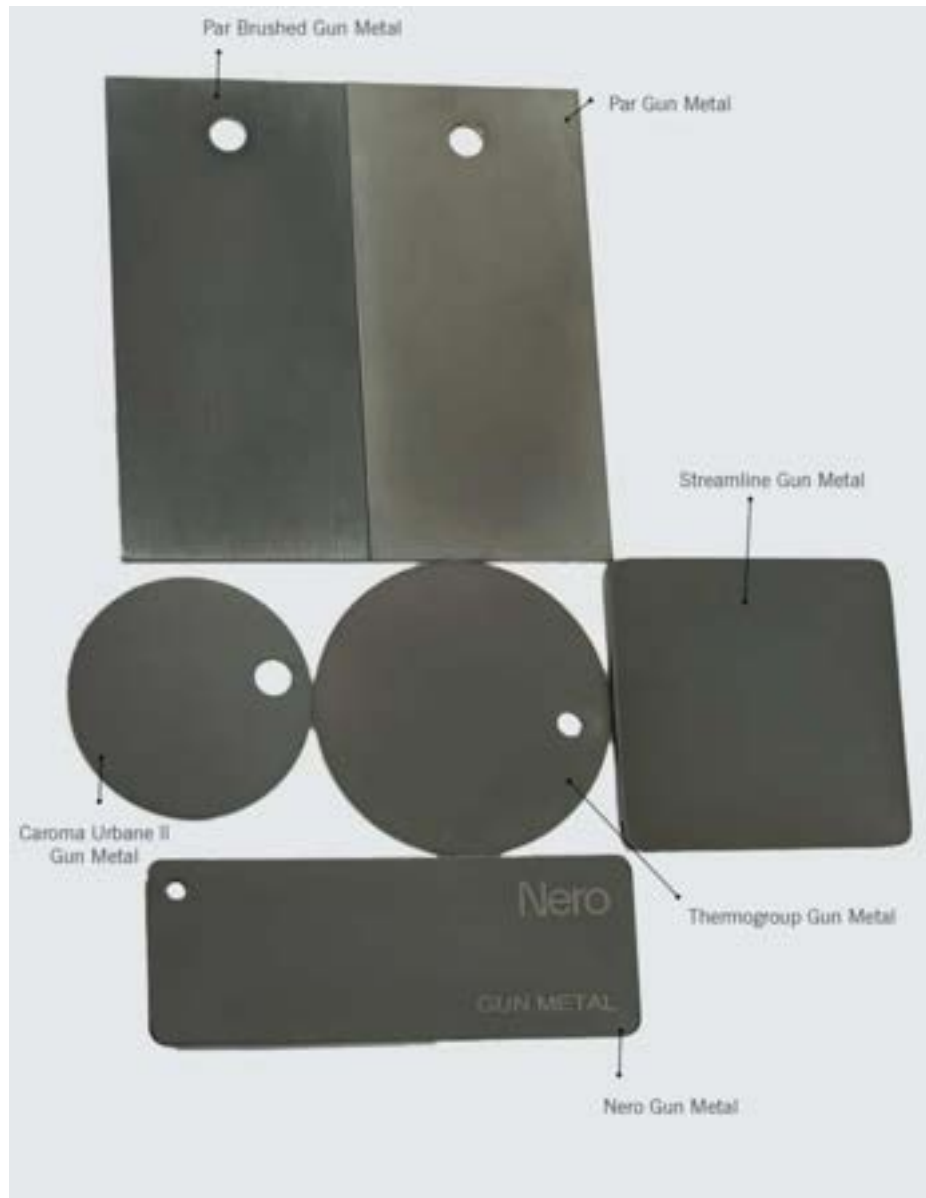
A gun metal finish is dark grey colour which can sometimes have subtle black, blue or silver undertones. While gun metal is a dark colour and pairs well as a contrast with lighter tiles or vanity, it is softer and not so harsh as a matt black finish. The appearance of gunmetal can vary depending on lighting conditions. In bright light, it may appear more silver or metallic, while in dim or shadowy environments, it can appear darker and more charcoal-like.

Thermorail Gun Metal compared with other Gun Metal Finishes



Thermorail Gun Metal Finish

Thermorail Gun Metal matches best with Par Taps and Caroma Urbane II Gunmetal. While the Thermorail Gun Metal is slightly lighter than the Nero Tapware & Streamline Gun Metal this still tones is quite nicely.

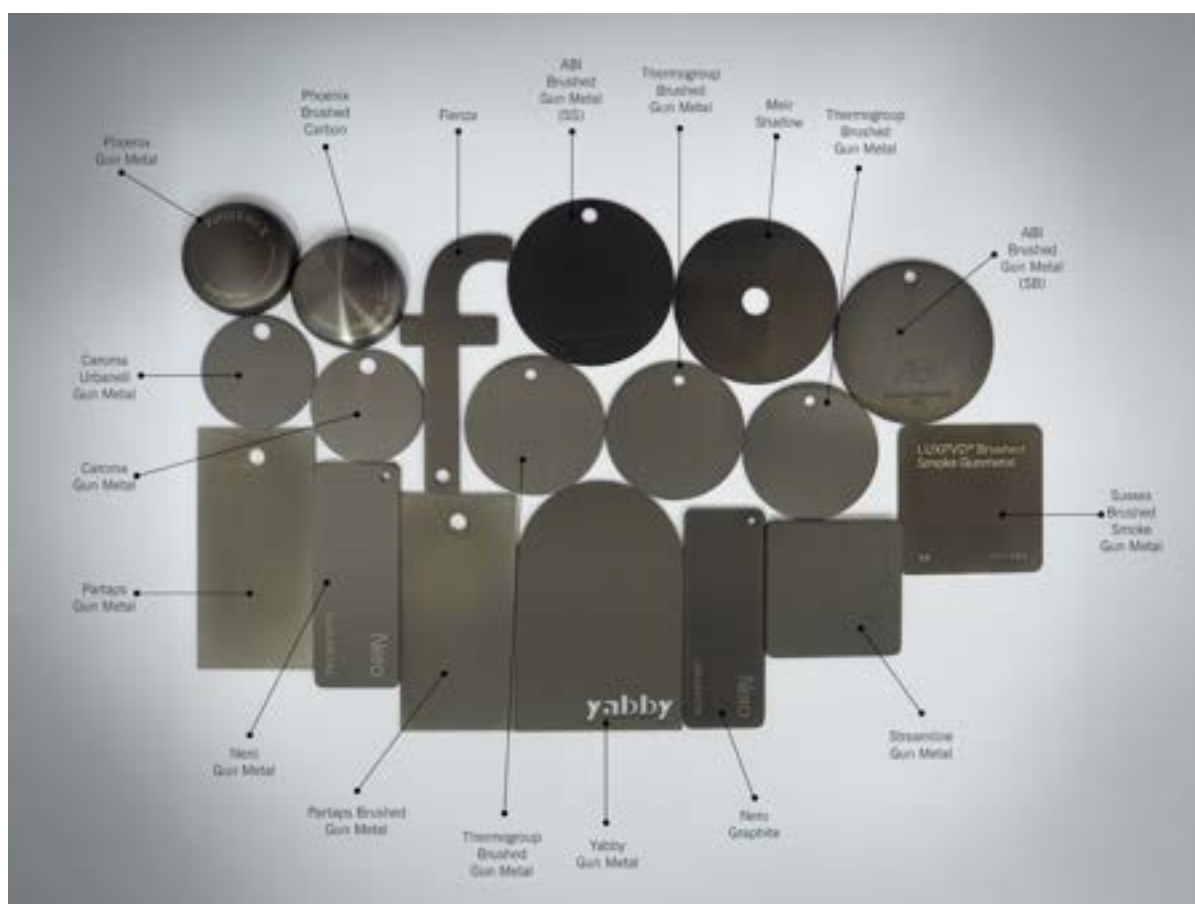


Thermorail Brushed Gun Metal Finish

Brushed Gun Metal

A gun metal finish is dark grey colour which can sometimes have subtle black, blue or silver undertones. While gun metal is a dark colour and pairs well as a contrast with lighter tiles or vanity, it is softer and not so harsh as a matt black finish. The Thermorail Brushed Gun Metal is darker than our standard Gun Metal and have the brush lines typical of a 'brushed' finish that gives the finish more texture and little bit of shine. This finish is a better match to many of the gun metal and brushed gun metal finishes available across tapware brands. See below the comparison of the Thermorail Brushed Gun Metal to a number of common brands.

Thermorail Brushed Gun Metal compared with other Brushed Gun Metal Finishes



Nero Graphite: Very similar tone although the Nero Graphite is a bit darker.

Nero Gun Metal: This finish is lighter, more matte and doesn't have the brush lines.

Fienza Gun Metal: This finish is very similar and good match to the Thermorail Brushed Gun Metal.

Par Tap Brushed Gun Metal: Very similar through slightly warmer tinge.

ABI Brushed Gun Metal (SB): Very similar although the ABI finish is more glossy

ABI Brushed Gun Metal (SS): This finish is a good deal darker than the Thermorail Brushed Gun Metal finish.

Meir Shadow: This is a slightly darker finish though it is a similar tone.

Sussex LuxPVD Brushed Smoke Gun Metal: This is a darker finish and is a more browner colour.

Caroma Gun Metal: Slightly lighter and more of a matte colour.

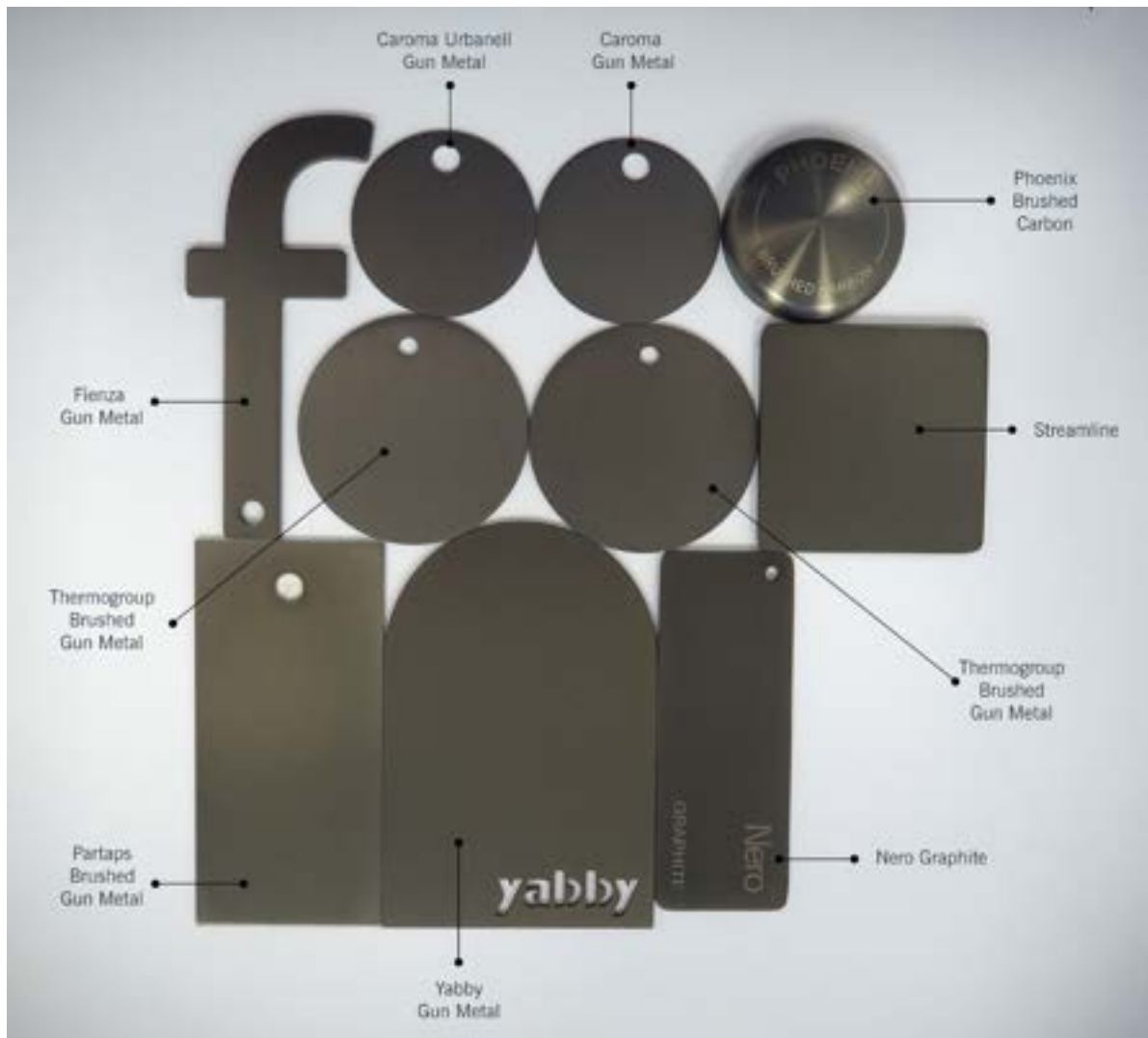
Phoenix Gun Metal: Much more matte, lacks brush lines and has a brown tinge.

Phoenix Brushed Carbon: Very similar colour and tone but has more shine.

Streamline Gun Metal: Fairly good match but the Streamline finish has a slightly browner under tone to it.

Thermorail Brushed Gun Metal Finish

Of all the samples compares the Thermorail Brushed Gun Metal matches best with the following: Fienza Gun Metal, Par Taps Brushed Gun Metal, Yabby Gun Metal and Streamline Gun Metal.



We hope this comparison has helped minimise any uncertainty when it comes to selecting a Thermorail finish that will best fit your design. Whilst there may be some discrepancy, bear in mind that the two items won't be touching each other in the room, for instance, the tap and your Heated Towel Rail will be separate in the room and this helps to minimise how noticeable the discrepancy in colour may appear.

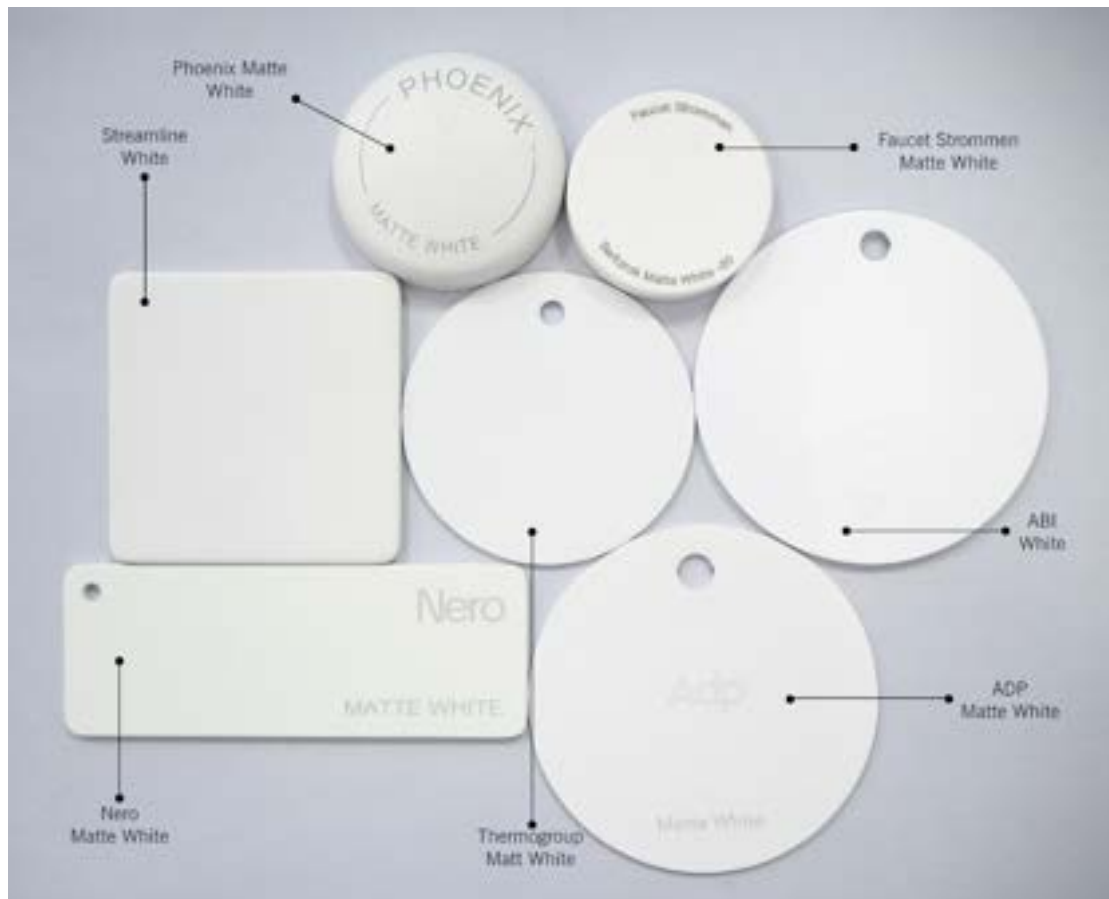
If you would like to request a sample of a specific finish, please feel free to contact our team.

Thermorail Matt White Finish

Matt White

The Thermorail Matt White is a powder coated finish over the base stainless steel. White is a neutral finish that matches in with many colour schemes and can be a good option if the heated towel rail is not available in the exact finish of your other accessories. See below the comparison of the Thermorail Matte White to several common tapware brands.

Thermorail Matt White compared with other Matt White Finishes



ABI: Fairly similar colour but is a lot more shiny.

ADP: This is a fairly good match.

Nero White: This finish is a lot more of a 'greenish' white.

Streamline White: This finish is a little bit more brownish.

Phoenix: This finish is quite a bit browner.

Faucet Strommen: This finish is a little bit more cream.

Thermorail Finish Matching Guide

Quick reference for matching Thermorail finishes to tapware brands.



Brushed Brass / Brushed Gold

Warm, muted gold tone with a soft brushed texture

Matches: ABI Interiors – BB, Meir – BG, Phoenix Tapware – BG

Less Ideal Matches: Methven – BB, Nero – BG



Brushed Nickel

Soft, silver-gray tone with a subtle matt finish

Matches: Phoenix – BN, Methven – BN, Caroma – BN

Less Ideal Matches: Some budget brushed nickel finishes may appear too shiny or cold



Gun Metal

Deep gray tone with cool undertones, almost charcoal

Matches: ABI – GM, Nero – GM, Phoenix – GM

Less Ideal Matches: Meir – Gunmetal (may appear darker or more matte in some batches)



Brushed Bronze

Warm bronze tone with coppery undertones, luxurious and rich

Matches: Meir – BB, Phoenix – Brushed Carbon or Brushed Copper (partial match depending on light)

Less Ideal Matches: ABI – No exact brushed bronze match, Methven – Limited matching finishes

Compatibility Table

	ABI	Meir	Phoenix	Methven	Nero	Caroma
Brushed Brass	✓	✓	✓		✓	
Brushed Nickel	✓	✓		✓		!
Gun Metal	✓	✓		✓		
Brushed Bronze	✓				!	